



# Statement of Direction 2018

---

Innovation in the Analytics Economy

January 2018





## Table of Contents

---

<b>Preface .....</b>	<b>3</b>
About our Statement of Direction .....	3
<b>Our vision for the future .....</b>	<b>4</b>
The Associative Difference® .....	5
Agility through innovation .....	6
Partners in your success .....	7
<b>Our solutions today .....</b>	<b>8</b>
Qlik Sense® .....	8
Qlik Sense Cloud® .....	12
Qlik Analytics Platform® .....	12
QlikView® .....	12
Qlik NPrinting® .....	14
Qlik GeoAnalytics® .....	14
Qlik DataMarket® .....	14
Qlik Connectors® .....	14
<b>Our future innovation and roadmap .....</b>	<b>15</b>
Data .....	16
Platform .....	18
Analytics .....	21
<b>About Qlik® .....</b>	<b>24</b>
Additional resources and information .....	24
<b>Release management and legal disclaimer .....</b>	<b>25</b>
Release management policy .....	25
Legal disclaimer .....	25

## Preface

Qlik® is a leader in the data analytics market, delivering intuitive platform-based solutions for self-service oriented analytics, guided analytics and dashboards, custom and embedded analytics, and reporting to approximately 45,000 customers worldwide. Companies of all sizes, across all industries and geographies, use Qlik solutions to visualize and explore information, generate insight, and make more informed decisions.

At Qlik, we believe that business intelligence is optimized by harnessing the collective intelligence of people across an organization. Data is the foundation of the new economy, and analytics turns data into actionable insights that transform businesses. Qlik's associative technology enables everyone in an organization to bring together and explore their data freely, without the limitations of query-based tools.

In this document, we describe our strategy and vision for the future. We outline the parameters of our innovation agenda, describe our solutions today, and outline our roadmap for 2018 and beyond. With our innovation, we strive to fulfill our vision to lead the data analytics market and touch the lives of more than one billion people.

### About our Statement of Direction

The information contained within this Statement of Direction is intended only to provide our customers, prospective customers, partners and strategic partners with a general overview of our anticipated product direction and future offerings. This document is provided without warranty of any kind.

This Statement of Direction is not a commitment, promise or other obligation on the part of Qlik to deliver any particular code or product functionality, nor does Qlik assume any obligation to update or revise any of the statements contained herein. Furthermore, Qlik makes no commitment that any future functionality outlined herein will be made available as part of maintenance and support.

Information in this Statement of Direction should not be relied on for making purchasing decisions, as the development, release, and timing of any features or functionality remains at Qlik's sole discretion and may change at any time.

### Qlik at a glance

Founded in Lund, Sweden in 1993

Approximately 45,000 customers in more than 100 countries

Solutions driving leadership in the data analytics market

- **Qlik Sense®**  
Self-service oriented analytics
- **Qlik Analytics Platform®**  
Custom and embedded analytics
- **QlikView®**  
Guided analytics and dashboards
- **Qlik NPrinting®**  
Collaborative analytics and reporting
- **Qlik GeoAnalytics®**  
Mapping and geographic analysis
- **Qlik Sense Cloud®**  
Analytics and collaboration online
- **Qlik DataMarket®**  
Third party data-as-a-service
- **Qlik Connectors®**  
Broad data connectivity options

More than 1,700 technology, solution, OEM, consulting and system integrator partners

More than 2,400 employees worldwide

Recognized leader by industry analysts including Gartner, BARC, Forrester, Dresner Advisory, Eckerson Group and Ventana Research

Headquartered in Radnor, PA, USA

## Our vision for the future

Qlik was founded on one simple belief: that business intelligence is optimized by harnessing the collective intelligence of people across an organization. We set out to build a new breed of data analytics solutions that bring out the best in people, accelerating organizations towards their goal of being more agile, and allowing them to thrive in the new analytics economy. Data is the foundation of the new economy, and analytics turns data into actionable insights that transform businesses. This transformation drives value across the enterprise by helping companies reimagine business processes, get closer to their customers, drive new opportunities and better balance risk and reward.

Today Qlik leads the market, delivering a cloud-ready data analytics platform that empowers individuals, groups, and organizations to become more agile and data driven. Qlik's modern data analytics portfolio supports the full range of BI use cases throughout an organization — including self-service visualization and exploration, guided analytics apps and dashboards, custom and embedded analytics, mobile analytics and reporting, all within a governed framework that provides trust and scale for IT. Qlik's products are uniquely designed around the user — how they share data and insights, collaborate with other people, and create a data-driven workgroups, departments, or entire businesses.

Qlik's vision for the future is defined by three core pillars of innovation – Data, Platform, and Analytics, and around three big ideas that will ensure we continue to lead and disrupt the data analytics market.



First, to drive the most value from analytics, people need to be able to work with all their data. This means accessing data wherever it resides, without being limited by its location, size or complexity. Our vision is to bridge user data, governed enterprise sources, and big data, associatively, to create a continuum from the individual through the business, on-premise or in the cloud. To do this we are making investments in data acquisition and integration, including a new associative big data indexing capability that will provide the Qlik associative experience on top of all types of data, while leaving the data where it resides.

Next, organizations need to think about how data is utilized in an infrastructure that fully supports their unique needs. With current offerings, customers must choose on-premise or cloud deployments. We aim to change the choice to “and” by building our platform to work seamlessly across on-premise and cloud environments (including private, managed or public cloud), and increasingly on edge-computing infrastructures and devices running any operating system. Qlik is investing in true hybrid cloud

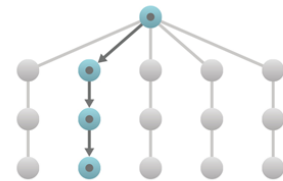
capabilities, with workload optimization through micro-services, allowing all components – from data connectivity and preparation, to analysis and visualization, to collaboration – to run seamlessly on premise and/or in public or private cloud environments.

Finally, users need to be met where they are, with the right capabilities for whatever they are trying to do. This could include a range of current and future use cases from visualizing data and creating analytics, to exploring centrally deployed apps, to consuming printed output, to analyzing on mobile devices (online or offline), and to building custom applications and embedded analytics. And increasingly, these experiences will be enhanced by machine intelligence to suggest insights and drive data literacy. We are therefore investing in a new cognitive engine and a number of augmented intelligence and machine learning capabilities to make all types of users smarter, while keeping people at the heart of decision making.

These three big ideas form the foundation of our vision and roadmap, and are reflected across all our products and platform strategy.

### The Associative Difference®

At the heart of Qlik products is a unique and powerful associative engine that brings together data and allows people to explore it in ways not possible with query-based tools. Simply put, relational databases and SQL queries were not designed for modern analytics. While it's true that SQL is required to pull data from many sources, most analytics tools depend on SQL and query based approaches as their fundamental architecture for modeling data and supporting interactivity. This is a major flaw – resulting in restricted linear exploration and analysis on partial subsets of data. Data sources must be brought together using SQL joins, and assumptions must be made in advance about what types of questions users will have. All other data is left behind. If a user wants to pivot their analysis based on something they discover, they will likely have to re-build complex queries, which often means going back to more experienced data experts. We call this the “ask, wait, answer” cycle. Every new type of question has a waiting period.



- x Partial subsets of data
- x Restricted linear exploration
- x Slow performance
- x “Ask, wait, answer” cycle



- ✓ All your data
- ✓ Explore without boundaries
- ✓ Speed of thought
- ✓ Unexpected insights

The Qlik Associative Engine is designed specifically for interactive, free-form exploration and analysis. It fully combines large numbers of data sources and indexes them to find the possible associations, without leaving any data behind. It offers powerful on-the-fly calculation and aggregation that instantly updates analytics and highlights associations in the data, exposing both related and unrelated values after each click. This means people are free to search, explore, and pivot based on what they see, without limitations and without having to go back to experts and wait. That is why Qlik users consistently discover previously unforeseen insights which have been missed by query based tools, driving tremendous value. That's the Associative Difference – and only Qlik can deliver it.

Qlik delivers unprecedented ROI to its customers by combining our associative technology with a platform-based approach that emphasizes agility for the business, with trust and scale for IT. A modern analytics platform needs to go far beyond simply allowing power users to build visualizations. Qlik's platform approach supports the full range of BI use cases throughout an organization — including self-service visualization and exploration, guided analytics apps and dashboards, custom and embedded analytics, and reporting. It offers intuitive data preparation and integration for data both big and small, open and standard APIs and toolkits to extend and embed analytics, shared, re-usable libraries of governed data and metrics, rules-based security for granular control of data access, and centralized management to easily support deployments for tens of thousands of users. With mobile device independence and the ability to deploy on premise or in the cloud, we offer our customers a complete and flexible analytics platform that delivers agility for business users while meeting all the governance, security, and scalability demands of IT across the enterprise.

### Agility through innovation

A significant characteristic of the new analytics economy, and indeed the technology and software business in which Qlik operates, is that change is constant; in fact, it is often cited as the only certainty.

All too often, however, Business Intelligence vendors lack the agility needed by their customers to adapt to changing environments and deliver solutions that are needed now. That is why Qlik focuses so much on a platform approach and an innovation agenda that keeps pace with and adapts to how individuals, groups and organizations think. Qlik's cloud-first strategy and architecture helps our customers take advantage of the agility offered by the cloud to deliver insight and value to all types of users, while removing complexity and cost.

It is this level of innovation that led Qlik to pioneer the market for data discovery and outgrow the overall BI and analytics market consistently over the last 10 years. Today, Qlik continues to be a leader in this market as validated by third parties including Gartner, BARC, Forrester, Dresner Associates, Eckerson Group, Ventana Research, and others.

With our heritage of innovation, we continue to deliver exceptional capabilities to our users by driving increased agility into our research and development processes to ensure we are able to innovate with increasing efficiency and pace. In 2017, we delivered four feature releases for Qlik Sense®, a new release of QlikView®, and continuous new capabilities in both Qlik Sense Cloud® and our value-added products. Our annual release cadence now includes five product releases per year for Qlik Sense. The result is that new capabilities are put into the hands of our customers more quickly and in a non-disruptive manner. Our rapid

### What the industry analysts are saying about Qlik

“Qlik Sense ranks first among large international vendors in: recommendation, business value, business benefits, customer satisfaction, product satisfaction, performance satisfaction, project success and embedded BI.”

- BARC, The BI Survey 17, October 2017

“Qlik continues to differentiate with its powerful associative BI engine.. such an exploratory UI is one reason customer references awarded Qlik one of the highest scores for business value in terms of ROI.”

- The Forrester Wave™: Enterprise BI Platforms With Majority On-Premises Deployments, Q3 2017

“Qlik Sense is ideal for customers and OEMs that want a modern analytics experience, a fast, time-tested analytics engine, and Qlik's highly intuitive, analytical interface..”

- Eckerson Group, Modern Analytics Platforms, October 2017

“Recommendation is more important than ever... Qlik Sense users are happier to recommend their solution than customers of all the other large international BI vendors.”

- BARC, The BI Survey 17, October 2017

“Qlik is committed to a hybrid approach to cloud – this is eminently sensible given the vast array of requirements and heterogeneous data landscapes found in organizations the world over.”

- Ovum, Qlik is Preparing for Mass-Market Transition with Qlik Sense and Hybrid Cloud, December 2016

innovation cycle has delivered new innovations to the market in areas such as smart search, smart visualizations, self-service data preparation, big data, mobile analytics, advanced analytics, security and governance, and the industry's first integrated data-as-a-service (DaaS) offering — Qlik DataMarket®. This investment in innovation has translated into tens of thousands of customers becoming more agile, data-driven businesses that harness the power of collective human intelligence.

## Partners in your success

With Qlik, technology is only a part of the story. Our commitment to customer and partner success is an integral part of our business model. We view this as a true partnership, driven by a customer success team committed to helping customers meet their business objectives and maintain a high level of satisfaction with Qlik's products and services. This includes bringing increasingly deep industry and functional-level experience to our product design and global services offerings spanning consulting services, education, and support. With this, we can deliver exactly what our customers need to address their business challenges.

Qlik's experience is supported by our extended partner network, which includes more than 1,700 committed, experienced partners around the globe. This includes leading system integrators and business consulting partners such as Accenture, Deloitte, KPMG, and PwC, as well as our original equipment manufacturer (OEM) partners, solution providers, technology partners, authorized training partners, and master resellers. Qlik Market ([market.qlik.com](http://market.qlik.com)) is our online marketplace that provides a showcase for our partners to offer their solutions to the market, including applications, connectors, and extensions for Qlik Sense and QlikView.

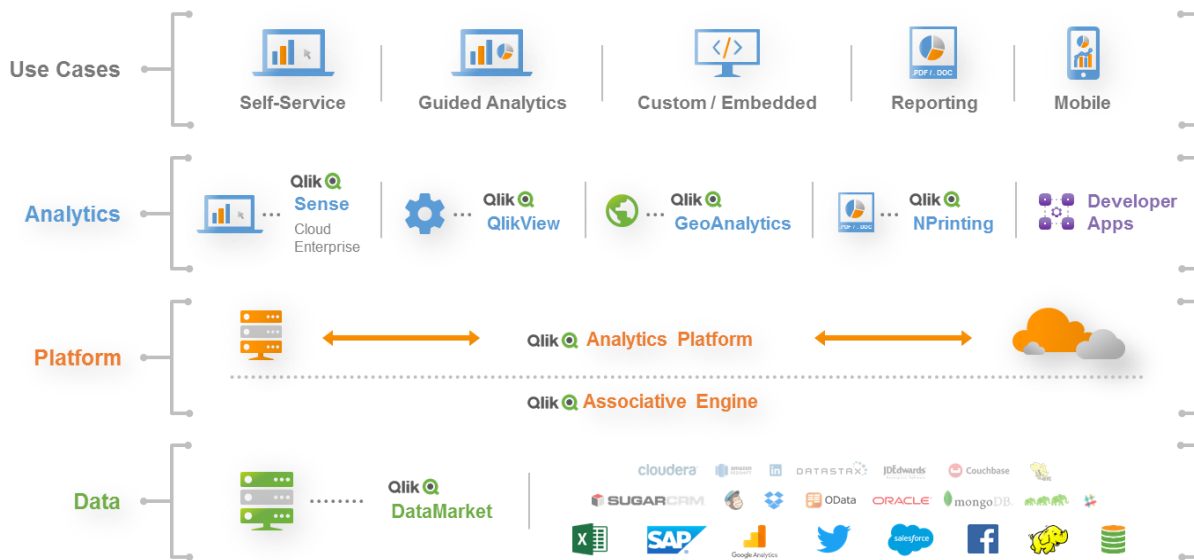
Our partner ecosystem and customer resources are further extended by Qlik Community ([community.qlik.com](http://community.qlik.com)), an active forum of more than 100,000 participants that share ideas, data, and knowledge. And Qlik Branch® ([branch.qlik.com](http://branch.qlik.com)), which has been designed as a collaborative workspace and open source exchange, provides customers, fans, developers, and partners access to the open and powerful APIs of Qlik Sense and QlikView, for better and easier integration with home-grown and third-party web technologies and applications. Qlik Branch currently features over 500 projects, including extensions, mash-ups, web applications and more, and offers access to Qlik Playground, a free programming environment that allows developers to use, explore, and quickly test ideas using the Qlik Engine and APIs online.

Overall, Qlik and its ecosystem support more than 45,000 customers, ranging from small- and medium-sized businesses through to large enterprises and public organizations, within a multitude of industries and across an expanse of geographic locations.



## Our solutions today

On top of our core engine and platform, our portfolio is made up of several core analytics products and a number of value-added offerings that provide enhanced capabilities. Qlik Sense is our next-generation product for self-service oriented analytics, supporting the full spectrum of BI use cases across an organization. It is currently offered in enterprise and cloud (SaaS) editions. The Qlik Analytics Platform®, which underpins Qlik Sense and supports custom and embedded analytics, is also offered as a standalone product. And QlikView is our first-generation product for guided analytics apps and dashboards. On top of these we offer Qlik NPrinting®, for collaborative analytics and reporting; Qlik GeoAnalytics®, for advanced mapping and geospatial analysis; Qlik DataMarket, our integrated data as-a-service offering; and Qlik Connectors®, our broad package of connectivity options for on premise and cloud based data sources.

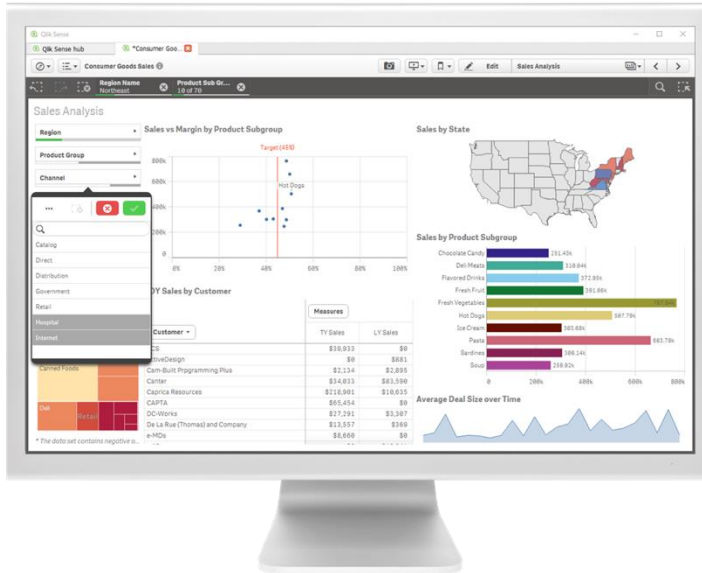


### Qlik Sense®

Qlik Sense is our next-generation product for modern, self-service oriented analytics. It supports the full spectrum of BI use cases across an organization, including self-service visualization and exploration, guided analytics apps and dashboards, custom and embedded analytics, and reporting, all within a governed framework that offers enterprise scalability and trust for IT. Qlik Sense offers a cutting-edge user experience in a smart, responsive, HTML5 client. And it is powered by our second generation Qlik engine, offering a new level of dynamic calculation and performance for broadly deployed, self-service oriented analytics. Whether simply consuming, exploring, analyzing, creating, or collaborating, Qlik Sense provides advanced capabilities that delight and empower users of all types and skill levels.

Qlik Sense Enterprise provides a complete set of capabilities for individuals, groups, and organizations, and delivers full access to the underlying Qlik Analytics Platform and APIs for customizing and extending the product. We also offer Qlik Sense Cloud, our SAS based product for groups and teams to build and share analytics online, and Qlik Sense Desktop, a free Windows application for individuals. Qlik Sense was originally released in September 2014, and has rapidly grown in maturity and capabilities with over 20 major and minor feature releases over 3 years.





## Associative Exploration

Self-service exploration in Qlik Sense is unmatched. Users can freely ask questions using simple, natural interactive selections, without boundaries or restrictions. Qlik's associative engine instantly responds after each click, recalculating all analytics to the new context and highlighting data relationships through easy-to-understand color cues. This empowers people to follow their own paths to insight, uncovering blind spots that would have been overlooked in query-based tools.

## Smart search

Smart Search in Qlik Sense is unlike any other business intelligence solution. It allows people to search across the entire app and all their data using keywords, to uncover the right analytics and insights. Qlik Sense not only reveals matching dimensions, but also associations that exist between dimension values across all sources, ranking the results by strength of association. And with visual search, the most relevant charts and graphs are displayed as thumbnails for easy navigation.

## Smart visualizations and analytics

Smart Visualizations in Qlik Sense offer new, innovative techniques for conveying meaning in data. They feature advanced summarization techniques, intelligent use of color gradients, and responsive design that adapts information based on screen size. Smart data compression summarizes massive data sets as heat maps on scatterplots, and time aware charting intelligently represents time series data without gaps or inconsistencies. Advanced Analytics Integration offers engine-level data exchange between Qlik Sense and third-party engines such as R and Python, allowing users to interact with advanced calculations in real-time using associative exploration. Qlik GeoAnalytics provides advanced mapping and geospatial calculation that allows users to analyze geographic data with non-geographic information to uncover patterns and hidden insights. And because visualizations are automatically integrated with Qlik's associative engine, they are fully interactive and respond to changes in context from anywhere in the app.

## Self-service creation

With Qlik Sense, people no longer have to wait for new reports or updates to visualizations. Business analysts and users can simply drag and drop to create or modify analytics, without having to wire objects together or build complex SQL queries. Creation in Qlik Sense is progressive; increased sophistication is disclosed only as a user wants and needs it. Governed, centralized libraries of data, metrics, and objects facilitate sharing and re-use and promote consistency and accuracy. And users can easily load their own data from multiple sources using smart, self-service data preparation and profiling, without having to be data model experts.

## Centralized sharing and collaboration

Groups and teams can easily collaborate in Qlik Sense to make better decisions. A unified hub offers a central point of access for Qlik Sense and QlikView apps, and Qlik NPrinting reports. It offers streams of content for different topic areas or workgroups, allowing people to locate and share relevant analyses in an organized manner. With streams, IT can control and govern content, ensuring the right people have access to the right analytics and reducing the risk of visualization chaos.

## Data storytelling and reporting

Interactive Data Storytelling allows people to create and present guided stories, rich with narrative and graphics, to communicate insights and facilitate discussion. Direct, in-context access to live analysis allows for immediate answers to follow-up questions that arise, reducing delays in decision making. Users can also print analytics, sheets, and stories directly to .PPT and .PDF, and export data to Excel®, based on their current selections. This allows easy sharing of insights with others in popular, portable formats. And organizations can centrally produce and distribute reports in Microsoft® Office and pixel perfect formats using Qlik NPrinting, allowing them to broadly spread knowledge and insight to large communities of people, while retiring legacy BI and reporting systems.

## Anywhere, anytime mobility

With Qlik Sense, people can instantly solve problems anywhere, anytime they arise, and developers don't need to worry about customizing content for mobile devices. Qlik Sense is inherently mobile, built from the ground up for location and device independence. Users get full capabilities on any device, including exploration, analysis, creation, and collaboration. A unified, touch-based HTML5 client provides intuitive operation, and responsive design intelligently adapts visualizations, data, and functionality to create the best possible experience on any device. And Qlik Sense Mobile, a native app for iOS®, features the associative engine running locally on the device — allowing for offline exploration without limits.

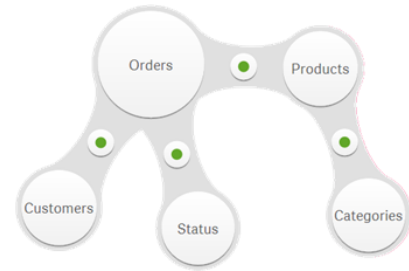


## Customization and extension

Qlik Sense is built on top of the Qlik Analytics Platform, allowing it to be fully customized to meet unique business needs. The Qlik Analytics Platform offers a complete set of open and standard APIs for developers to build custom applications, embed analytics in operational apps, and extend the functionality of Qlik Sense for new types of visualizations, smart capabilities, and specialized business requirements. These platform capabilities can be utilized by developers with standard technology skill sets such as HTML5, JavaScript, and .NET.

## Data preparation and integration

Qlik Sense offers a robust set of data preparation and integration capabilities, allowing organizations to cleanse, transform, and unify multiple disparate data sources without requiring external tools or data repositories. Smart, self-service data preparation allows non-technical users to easily unify, transform and load multiple data sources through a visual interface. Intelligent data profiling suggests the best associations between sources and automatically handles date/time and geographic formats. And powerful ETL (extract, transform, load) scripting is available for complex data integration challenges.



Qlik Connectors® provides broad connectivity for virtually any data source, including spreadsheets, databases, operational systems, ERP, cloud sources, and web apps and services. And Qlik DataMarket offers libraries of curated, external data sets, available as a service for easy integration into analyses. And with On Demand App Generation, analytics apps can be dynamically created from Big Data sources such as Hadoop®, Teradata®, and Cloudera®, allowing each user to explore just the information within the data lake that is relevant to them.

## Enterprise governance and management

With Qlik Sense, organizations benefit from enterprise capabilities not seen in standalone visualization tools. This allows companies to offer the flexibility of self-service discovery without having to trade off management, governance, security, or scalability.

The Qlik Management Console (QMC) offers a central point of management and monitoring for all areas of Qlik Sense, including multi-geography deployments. The QMC provides a large set of configuration options for content and resources that drive quicker deployments, efficient and flexible license management, and proper use of applications, objects, and data. It offers a web-based, responsive, and touch-enabled user interface for access on any device.

Qlik Sense offers a centralized, flexible rules-based security model that provides customized, robust protection for all areas of the product. Administrators can define security rules based on users, actions, resources, and the environment for all areas of the product. Governed, centralized libraries help to ensure consistency and accuracy of data and analytics across the organization. And dynamic data reduction provides granular control over information access down to the row and column level.

## Broad deployment

Qlik Sense can be deployed on the infrastructure of your choice, either on premise, public, or private cloud. Third-party hosting services are available through our certified partners, and Qlik Sense is listed on several leading cloud infrastructure marketplaces for immediate deployment to the cloud.

Qlik Sense is built using an elastic scaling architecture that supports seamless deployment and expansion across geographies. And with the Qlik engine at its core, Qlik Sense easily scales to tens of thousands of concurrent users and extremely large data sets, offering industry-leading, high-speed dynamic calculation and performance.

## Qlik Sense Cloud®

Qlik Sense Cloud is our SaaS based offering of Qlik Sense for individuals and workgroups, allowing users to create and share Qlik Sense analytics in the cloud. Users can easily load data, create analytics, and share their apps privately with others through simple email invitations. Apps can be accessed and explored on any device, including mobile devices, with full interactivity.

Users can choose between the free Qlik Sense Cloud Basic or the subscription based Qlik Sense Cloud Business. Qlik Sense Cloud Business allows groups and teams to operationalize cloud based analytics, expanding storage and app sizes, adding security and governance features for group-level governance, offering direct data connectivity and automated data refreshes, and providing access to expanded Qlik DataMarket data. Customers can sign up for a free Qlik Sense Cloud account at

[www.qliksensecloud.com](http://www.qliksensecloud.com).

## Qlik Analytics Platform®

The Qlik Analytics Platform allows developers to easily and flexibly extend and embed the powerful analytics capabilities of Qlik Sense for custom applications and use cases. It includes the Qlik engine, developer APIs, and management tools that underpin Qlik Sense, and was released as a standalone product in June 2015. The Qlik Analytics Platform provides direct access to the power of the Qlik engine through open and standard APIs such as mashup, extensions, engine, and management APIs. This open access allows developers to build fully custom applications, embed analytics in operational apps, utilize third-party visualizations, and extend analytics wherever and however they are needed, harnessing the same power in their apps as Qlik Sense but with much greater flexibility.

The Qlik Analytics Platform enables OEM partners to take full advantage of the Qlik engine, including use of compelling visualizations and APIs, to easily build analytics capabilities right into their solutions. Qlik OEM partners achieve a competitive advantage providing their customers with beautiful visualizations and analytics within their solutions, which maximizes value. The Qlik Analytics Platform offers both a capacity and a consumption-based licensing approach, allowing OEMs to choose the licensing that best suits their needs.

## QlikView®

QlikView is our first-generation data discovery product that offers rapidly developed, highly interactive guided analytics applications and dashboards, purpose built for business challenges. QlikView allows users to rapidly build and deploy analytic apps without the need for professional development skills, driving faster response to changing business requirements, shorter time to value, and more insight across the organization. Current QlikView 12.x versions run on the same second generation Qlik engine as Qlik Sense, ensuring compatibility and that future innovation will benefit both products.



### **Guided analytics apps and dashboards**

QlikView offers interactive dashboards and analytics applications, purpose built by developers, which guide the user to discovery. Users can take advantage of a highly polished, customized user experience, specific to business problems. QlikView apps offer a beautiful, pixel-perfect interface, delivered through any browser, which can be customized for complex use cases and solutions while still allowing for an unmatched level of interactivity and discovery.

### **Associative exploration**

Like Qlik Sense, QlikView apps are driven by Qlik's associative engine, allowing unrestricted exploration and discovery. People can freely ask questions and probe associations in their data using simple, natural interactions such as selection and search. The Qlik engine instantly responds after each click, recalculating all analytics and highlighting data relationships through easy-to-understand color cues. This empowers people to follow their own ideas to insight, uncovering blind spots that would have been overlooked in query-based tools.

### **Agile application development**

QlikView is an agile platform for developers to build rich interactive analytic applications without the need for professional development skills. QlikView offers a robust set of tools and capabilities that meet the needs of all types of developers, as well as power business users who want to create their own analytic apps. It provides robust integration of data from multiple sources, rapid development and deployment of applications, and APIs for customization and extension. And with advanced analytics integration, apps can take advantage of third party engines such as R and Python, allowing calculations to be explored by the user in real-time.

### **Enterprise capabilities**

QlikView offers enterprise capabilities designed to maximize performance of large deployments, making them easier for IT professionals to secure, administer, and scale. QlikView provides an enterprise-class architecture with client, server, and publisher components, robust security for users, data, and applications, and load balancing and clustering to scale deployments. QlikView can be deployed on premise or in the cloud, and third-party hosting services are available through our certified partners.

Administration capabilities include a unified management console, an online access point portal to deploy applications, and metadata and API management functions. And, the QlikView Governance Dashboard is a free QlikView application that delivers a 360-degree view of any QlikView deployment by visualizing information about its efficiency and effectiveness.

## Qlik NPrinting®

Qlik NPrinting is our advanced report generation and distribution application for Qlik Sense and QlikView. It allows organizations to create great-looking reports quickly, in a variety of popular formats including Microsoft® Office, pixel perfect PDF, and web. Qlik NPrinting ensures that reports get to the right people how and when they need them, through managed distribution, on-demand reporting, and a secure portal for user self-service. And it offers enterprise scalability and security features such as a web-based user interface for developers, enhanced multi-engine (multi-threaded) scalability, and role-based security. With Qlik NPrinting, Qlik can serve as a single solution for both interactive analysis and reporting, allowing organizations to retire legacy BI and reporting systems.

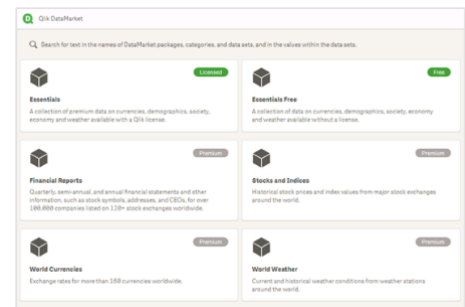


## Qlik GeoAnalytics®

Based on our acquisition of Idevivo in December 2016, Qlik GeoAnalytics provides advanced mapping and location-based analytics for Qlik Sense and QlikView. It allows users to add interactive multi-layer maps to applications, and moves beyond visualization with advanced geospatial tools that support for a broad range of use cases, revealing patterns and uncover hidden relationships and insights between geographic and non-geographic data. Using patented technology that compresses and streams mapping data, both Qlik Sense and QlikView customers can better understand their growing amount of “where” data. Qlik offers a combined mapping and geographic analysis product, and a geocoding service.

## Qlik DataMarket®

Qlik DataMarket is our integrated data-as-a-service (DaaS) offering, providing a comprehensive library of data sets from trusted sources offered on a subscription basis. A wide range of topic areas are available, including business demographics, currencies, population, economic indicators, and weather. Data is accessible from within Qlik Sense through a simple graphical user interface that guides the user through the data merging process, and is also available in QlikView. With Qlik DataMarket, anyone can easily augment their analyses with external data to get an “outside-in” perspective for added context and broader insights.



## Qlik Connectors®

Qlik Connectors provide connectivity to a wide variety of data sources, both internal and external. From file based sources, operational applications and databases to websites, cloud-based applications and big data sources, Qlik Connectors allow rapid data access and integration using pre-configured, production-proven components. Qlik Connectors include the Qlik Salesforce.com® Connector, which improves CRM analytics and visibility, the Qlik SAP® connector package, enabling analytics from a variety of SAP systems, and Qlik Web Connectors, a comprehensive suite of pre-configured connectors for major social media and web-based data sources.

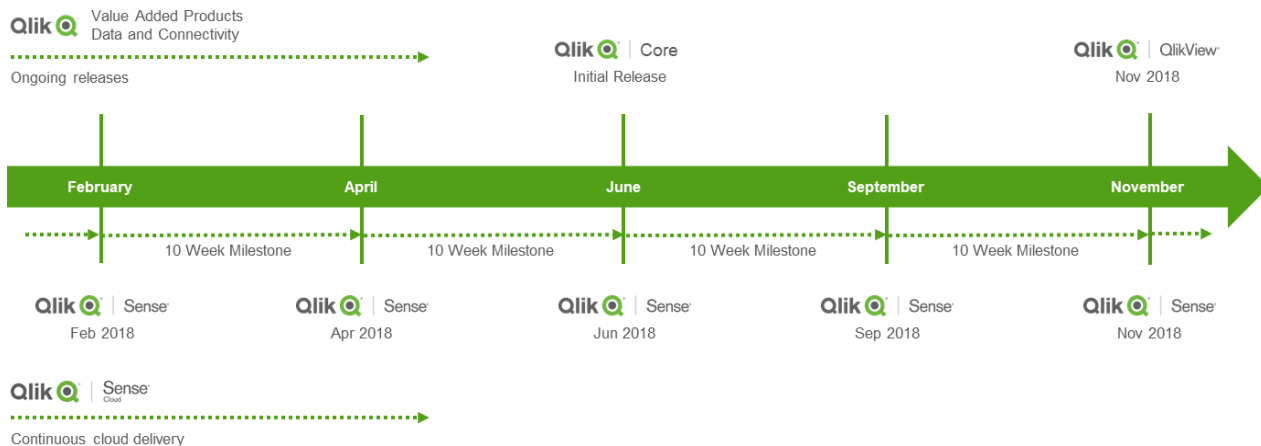


## Our future innovation and roadmap

At Qlik, our innovation strategy and resulting roadmap focus on three key areas: data, platform, and analytics. Our investments in data capabilities include access and connectivity, self-service data preparation, data management and governance, our planned Big Data indexing capability, and Qlik DataMarket, our DaaS offering. Our platform investments center on our core engine, next generation hybrid cloud architecture, current cloud portfolio, managed cloud offerings through partners, and developer tools and ecosystem. Finally, our investments in analytics include everything we do to support all the analytics use cases in an organization, including future augmented intelligence and machine learning capabilities.

These focus areas drive new capabilities and value into all our products, as well as into our underlying engine and platform. We continue to invest in our core associative engine technology, which is our primary differentiator that drives the associative user experience in Qlik products. Our vision is to expand our platform and architecture to seamlessly run on premise, in the cloud, and everywhere in between, connect to any data source wherever it resides, and drive a virtually unlimited set of smart user experiences for all types of people.

Qlik is planning a number of product releases for 2018 and beyond. Our release cadence for Qlik Sense includes five product releases annually, in February, April, June, September, and November. For QlikView, we intend to provide at least one new feature release in 2018. We expect to release other products on an ongoing basis over the course of the year, including updates to Qlik NPrinting, enhancements and new offerings for Qlik Sense Cloud, new data packages for Qlik DataMarket, and new releases of other products. The information that follows is intended to provide an overview of Qlik's planned releases and updates and is not a commitment on our part to deliver any future product or functionality or make any future product or functionality available as part of maintenance and support.





## Data

Data connectivity, preparation, and integration capabilities are fundamental to our goal of allowing users to access data wherever it resides, without being limited by its size or complexity. We are planning significant investment in our data capabilities for 2018 and beyond, including enhanced smart, self-service data preparation and governance features in Qlik Sense, additional Qlik DataMarket topical packages and improvements, continued expansion of Qlik Connectors, and new big data capabilities such as Associative Big Data Indexing.

### Qlik Sense

In 2016 we introduced Visual Data Preparation, which offers a unique visual method for integrating data from multiple sources. Data sets are depicted as ‘bubbles’, allowing users to drag and drop to create associations, with intelligent profiling that suggests the best associations between sources to the user. In 2017, we built on this with a broad range of new capabilities for self-service data preparation. Included is visual data profiling, a new smart capability which auto-generates insights about the data being loaded, data binning, which allows users to easily create buckets or groups based on numeric data, and table concatenation, to visually combine tables even if they do not have the same fields. We also added a variety of new transformation capabilities to deal with common data quality issues such as null or bad data, custom value ordering, merging multiple data values into common values, and field splitting. We also added the ability to include a scripted data set in the visual data prep process, perform sequential transformations on tables and fields, and manually enter data into a table for use in analysis. And finally, we created a new user interface for connectors, and added data lineage capabilities to track transformations that took place in the data load process.

Going forward into 2018 and beyond, we are planning additional improvements to the data acquisition, preparation, and integration capabilities in Qlik Sense. We plan to enhance our smart data preparation capabilities to suggest the right types of charts and visualizations based on the data, and to automatically generate them directly within sheets. We are also planning workflow improvements for data preparation, improved filtering and aggregation when selecting data from sources, further enhancements to data transformation capabilities, and automated currency translations.

In addition, a new Global Library capability will provide a central, secure library of data models for analysis. It will offer users the ability to select data sources from a “catalog” of managed data models, created centrally by IT or shared by skilled data experts, and will offer smart data enrichment suggestions to guide the user to the right data sets. This will allow organizations to manage, secure, and monitor centralized data sets while offering them for self-service usage, driving re-use of data preparation efforts, accuracy, and governance across multiple apps and users in an organization.

### Associative Big Data Index

Our innovation in the data area largely centers on a new Associative Big Data Indexing capability that will provide the full associative experience on top of Big Data sources, while leaving the data where it resides. This will allow the Qlik engine to store information about resident data in sources such as data lakes and Hadoop, without the need to load all the data into memory. This capability will be highly distributed, leveraging the power of Qlik’s Associative engine to deliver fast, interactive discovery across huge data sets.

## **Qlik DataMarket**

Qlik DataMarket is our integrated DaaS (data as-a-service) offering, originally released in mid-2015. It provides a comprehensive library of data sets from trusted sources offered on a subscription basis. It is available for Qlik Sense and QlikView, with a variety of data sets including business demographics, currencies, population, economic indicators, and weather. Since its inception we have delivered several new topical packages and enhancements for Qlik DataMarket, including stock indices, company financials, expanded demographic data, and a suite of healthcare data packages such as provider information and cost reports. We also made improvements to the user experience for selecting data, and added a new catalog app for a comprehensive view of available information.

Into 2018 and beyond, we will continue to expand Qlik DataMarket to offer enhanced features and new data sets and premium packages. We will offer additional topical data packages with domain and vertical focus areas such as consumer demographics, business firmographics, retail industry data, and additional healthcare data. We will also be launching a data provider partnership program that will offer third party data sources on Qlik DataMarket for expanded variety and value. And we are planning integration with Global Library, with smart data enrichment suggestions from Qlik DataMarket sources.

## **Qlik Connectors**

Qlik Connectors provide connectivity to a wide variety of data sources, including file-based sources such as Excel and XML, enterprise sources such as Oracle®, SAP, and ODBC databases, cloud-based sources such as Salesforce.com, and Big Data sources including Teradata, Cloudera, and others. In 2016 we introduced Qlik Web Connectors, based on our acquisition of Industrial Codebox and their QVSource product, which offers over 40 new connectors to popular web applications and services such as Google AdWords™ and Microsoft Dynamics® CRM.

In 2017, we continued to expand and enhance our connectivity capabilities, both on-premise and in the cloud. We introduced new connectors for web sources such as Bit.ly, Box, Slack, Google Search Console, and Microsoft OneDrive, which are included in Qlik Web Connectors. In addition, we introduced a new SAP InfoProvider connector which offers access to MultiProviders and streamlines access to Infocubes. We also introduced two new storage connectors for Dropbox® and Amazon Redshift®. And we included many our connectors in Qlik Sense Cloud, including a generic REST connector, Facebook®, Twitter®, Microsoft Dynamics CRM, Google Analytics™, YouTube™ analytics, and our storage connectors.

We will continue to expand our connectivity options and features for Qlik Sense and QlikView in 2018 and beyond. We plan to integrate Qlik Web Connectors directly into Qlik Sense, improving the user experience and eliminating the need for additional downloads. We also plan improved performance for integrated ODBC drivers and new ODBC sources such as MongoDB®, Presto, Apache Spark™, DB2®, ServiceNow®, Phoenix and more. We also plan extended single sign-on support, additional SAP Business Explorer® (SAP BEx) query support, and Smart connectivity to common business sources utilizing meta-data.

In summary, our investments in data continue to bring us closer to our vision of bridging user data, governed enterprise sources, and big data, associatively, to create a continuum from the individual through the business, on-premise or in the cloud.

## Platform

Qlik's platform strategy centers on an architecture that runs seamlessly across on-premise and cloud environments of all kinds, and increasingly on edge-computing infrastructures and devices running on any operating system. This serves as the foundation to support all analytics use cases and users in an organization, and empower developers to build data driven applications using the Qlik engine and APIs. Our future investments will include true hybrid cloud capabilities for Qlik Sense Enterprise, enhancements to our hosted Qlik Sense Cloud offerings, new platform capabilities for developers and OEMs, and expanded offerings through partners and our online marketplaces representing Qlik's broader ecosystem.

### Qlik Sense Enterprise

For Qlik Sense Enterprise, we are making investments in a true hybrid cloud architecture, with workload optimization through micro-services, allowing all components – from data connectivity and preparation, to analysis and visualization, to collaboration – to run seamlessly on premise and/or in public or private cloud environments.

In 2017 we took several steps to lay the foundation for our hybrid cloud strategy, including building the core, highly scalable, Linux<sup>®</sup>-based micro-services architecture that will support hybrid environments, introducing subscription based pricing, and offering supported Windows desktop and native mobile clients for Qlik Sense Enterprise. In 2018 we plan to roll out hybrid capabilities in several phases, beginning with publishing of Qlik Sense apps to the cloud for consumption. We will enable our current Windows version of Qlik Sense Enterprise to publish apps to both private cloud deployments and a new Qlik Cloud hosting service, both running our new Linux version of Qlik Sense. This will then evolve into augmenting apps in the cloud, followed by full content creation, data preparation, and collaboration. Our goal is to enable multi-directional content distribution between enterprise and public/private cloud environments, based on data policy, performance, cost, and data location, with all sites running on our new architecture.

We will be introducing a number of hybrid cloud features in addition to architecture, such as a new hub for content organization, access, and collaboration, new licensing and entitlement capabilities such as single identity management, full support for extensions and themes, support for desktop and mobile offline clients, and a global resource library. We plan to offer all hybrid capabilities to existing Qlik Sense Enterprise customers included under maintenance, with the exception of our hosted Qlik Cloud services, which will require a subscription license.

In addition, third-party hosting services are offered by our certified partners, as either fully private managed cloud solutions or hybrid deployment models. This includes a hosted, pre-configured Qlik Sense option on Amazon Web Services<sup>®</sup>, allowing customers to quickly configure and activate Qlik Sense Enterprise environments. In 2018 and beyond, we plan to expand the managed service provider (MSP) offerings from Qlik partners to enable more providers.

### Qlik Sense Cloud

Qlik Sense Cloud is our SaaS based version of Qlik Sense for individuals and workgroups, available in Basic and Business editions. Qlik Sense Cloud Basic is a free service that allows individuals to create and share Qlik Sense apps in the cloud, supporting sharing with up to five users. Qlik Sense Cloud Business is a subscription based service allowing groups and teams to operationalize cloud-based analytics, with unlimited sharing, expanded app and storage sizes, and access to Qlik DataMarket Essentials. It also offers security and governance features such as a collaborative workspace, group data space, and group shared networks. In 2017 we introduced direct data connectivity and automated

refreshes, for cloud based and on-premise data sources. And, we greatly expanded connectivity options including Facebook, Twitter, Microsoft Dynamics CRM, Google Analytics, YouTube, Dropbox and Amazon Redshift.

We are planning several new capabilities for Qlik Sense Cloud in 2018. In addition to enhancements in the core analytics experience of Qlik Sense, we plan to offer additional improvements to the cloud user experience, contextual user onboarding for better enablement and support, and support for themes and certified extensions. In addition, for Qlik Sense Cloud Business, we will continue to expand connectivity with new on-premise data sources such as Oracle, PostgreSQL, and MySQL, and additional cloud sources such as GitHub®, Google, and Office 365® Sharepoint®. And we plan to add new business-level features such as exporting data to Excel and storing data to .qvd and .csv files.

### **Qlik Analytics Platform**

The Qlik Analytics Platform, which includes the Qlik engine, developer APIs, and management tools, underpins Qlik Sense and was released as a standalone product in 2015. It allows developers to easily and flexibly extend and embed the powerful analytics capabilities of Qlik Sense for custom applications and use cases. The Qlik Analytics Platform underpins Qlik Sense, meaning that ongoing investments made in Qlik Sense analytics will also be available in the Qlik Analytics Platform. Since initial release we have made many enhancements to the Qlik Analytics Platform and our developer capabilities, including the addition of several new APIs for app integration, programmatic visualization, and hierarchical data, open source contributions for data import and services monitoring, widgets for accelerating the development and reuse of custom user interface objects in Qlik Sense, and an IDE plugin for Visual Studio.

In 2018 and beyond we plan to invest further in the Qlik Analytics Platform. We are planning a new Picasso / Enigma integration API for building custom visualizations, a single configurator to generate URLs for objects, sheets, and apps, support for themes, and configurable and persistent white labeling. We are also planning improvements to Qlik Dev Hub, aimed at making it central to the development of platform based applications. This includes new capabilities such as the ability to build objects for use in mashups without requiring a baseline Qlik Sense app, richer tools for developers to build, manage, and version components, app 'promotion' across different environments, and integration with source control systems. And we are planning a new learning hub with resources to explore our APIs.

We will also be launching a new offering for developers called Qlik Core, which will provide access to the Qlik engine and APIs without the use of Qlik Sense Enterprise. This will allow developers to incorporate the power of the Qlik engine into a wide variety of projects, both BI related and other (such as search, workflow, etc.), which may or may not include visualization. Qlik Core will be based on our highly scalable Linux based architecture, to gain maximum flexibility, scale and cost efficiency. Surrounding Qlik Core, we are planning enhanced developer toolsets, tutorials, and examples, and subscription based developer programs for access to premium content and support resources. We also plan to enhance Qlik Playground, our online developer environment, with new developer tools and access to Qlik Core. And, we plan to offer Qlik Core as a platform-as-a-service for hosting by third parties and as an endpoint for cloud developers, and a mobile SDK allowing developers to build native mobile applications using the Qlik engine as a component.

## **Ecosystem**

Qlik and our partners offer a variety of value-added, cloud-based services that enhance the capabilities and deployment options for our products. Qlik Market is our online exchange for Qlik partners to showcase their technologies and solutions, including apps, connectors, and extensions, to help our customers get the most out of our products. Qlik Branch is our open-source community for developers to accelerate innovation by sharing custom solutions that take advantage of the capabilities and extensibility of the Qlik API platform. Qlik Playground is a free, online programming environment that allows developers to quickly test their ideas using the Qlik engine and APIs.

In 2017 we launched a program for certifying extensions created by our partners, which will help to ensure quality, functionality, security, and maintainability for our customers looking to extend the platform. In 2018, we will be expanding this program to allow more developers to participate, support private extensions for individual projects that don't want to expose extensions commercially, and support formal versioning of extensions. We also plan to relaunch Qlik Market with ecommerce capability, allowing buyers and sellers to transact within the marketplace, expand the content available on Qlik Market, and more tightly integrate it into the Qlik Sense experience.

In summary, our investments in our platform and developer capabilities continue to bring us closer to our vision of running seamlessly across on-premise and cloud environments of all kinds, supporting all types of analytics use cases, and empowering developers to build data driven applications using the power of the Qlik engine.

## Analytics

Qlik's strategy for analytics is to meet users where they are, with the right capabilities for whatever they are trying to do. Our products are aimed at supporting a range of current and future use cases from visualizing data and creating analytics, to exploring centrally deployed apps, to consuming printed output, to analyzing on mobile devices (online or offline). We plan to invest heavily in our analytics capabilities in Qlik Sense, while maintaining and enhancing QlikView and our specialized products – Qlik NPrinting and Qlik GeoAnalytics. And we will enrich our analytics capabilities with machine intelligence to suggest insights and drive data literacy.

### Qlik Sense

Since its inception in 2014, we have made a variety of improvements to Qlik Sense, including new types of visualizations and objects, expanded search and exploration capabilities, smart data compression, printing and exporting, and a range of user experience improvements. In 2017 we delivered a number of analytics related features to Qlik Sense, including four new visualizations – a histogram, box plot, distribution plot, and waterfall chart, and advanced coloring features allowing users to specify colors for visualizations, measures, dimensions, and dimension values. We also added advanced analytics integration, allowing real time exploration of calculations from third-party engines such as R and Python, directly integrated with our Associative Engine. And we made enhancements for enterprise management and governance.

Qlik Sense Mobile, our new native app for iOS, was also launched in 2017. Qlik Sense Mobile features the Qlik Engine running locally on the device, for full exploration and analysis when offline. Users can work online in a Qlik Sense Enterprise environment, and then download apps with reduced data sets for offline use. And, Qlik Sense Mobile supports configuration and deployment through popular EMM tools such as VMware Airwatch® and MobileIron®.

For 2018 and beyond, our innovation areas for analytics in Qlik Sense will include enhanced visualization and exploration, search and natural language, comparative and predictive analysis, new geographic, mobile, and collaborative capabilities, and augmented intelligence to suggest insight and further drive data literacy. We are planning new visualization capabilities such as Sankey charts, Trellis charts, and mini charts in tables, comparative analysis, dynamic grouping / binning, custom themes to style apps based on corporate standards, improved layout options like a resizable grid and scrollable layout, and accessibility improvements for keyboard navigation and screen reading. Our search capabilities will evolve to support natural language and conversational analytics, accessible from the hub for search across apps and from within individual apps. And we are planning a new, advanced map object based on Qlik GeoAnalytics technology, supporting multiple layers and a variety of shapes and visualizations.

We are also planning improvements to our mobile and collaboration capabilities. For mobile, we will be adding capabilities to our Qlik Sense Mobile app for iOS, such as iPhone® support, user-driven app reduction, offline geographic maps, Touch ID® and Face ID® support, and offline content creation. We also plan a new native app for Android with offline support. Our collaboration capabilities will also continue to evolve, with features such as self-service publishing, favorites and collections, pinning and tagging, and chart sharing via email. Our goal is to expand our collaboration features to support sharing with messaging and social platforms, annotations and discussions, self-service digests, and more advanced social BI features. We are also planning self-service alerting for creating notifications based on conditions in the data, and improvements to data storytelling.



In addition to user-driven analytics, machine intelligence represents a major new area of value that has the potential to significantly enhance analytical processes, through automation and auto-suggestion of insights. At Qlik, we believe that machine intelligence should work in combination with human centric analysis, creating a multiplier effect where statistical insights and intuition work together. In 2017, we invested in foundational research for a new cognitive engine, with the goal of supporting smart capabilities with insight suggestions and machine learning across all phases of the analytics life-cycle.

In 2018 and beyond, we will begin to integrate AI capabilities into Qlik Sense, driven by the new cognitive engine. We are planning features such as automated chart suggestions, natural language generation and search, algorithmic insights and forecasting, and multi-attribute selection and visualization. We are also planning smart data preparation and enrichment suggestions from our Global Library, and content recommendations in the hub. And, with our inherent ability to extend our platform and embed insights in downstream applications using our open APIs, developers can easily build smart features such as conversational and immersive analytics. Combined with our Associative Engine and best in class search, exploration, and visualization, we believe Qlik Sense is well positioned to deliver true augmented intelligence in the future.

### **QlikView**

In 2015 we released QlikView 12, which upgraded QlikView to the second generation Qlik engine that was re-engineered as part of the development of Qlik Sense. This strategy offers significant benefits, including performance and functionality improvements and bi-directional data model compatibility with Qlik Sense. It also means that engine-level improvements are available to both QlikView and Qlik Sense as part of one common underlying platform.

Since the release of QlikView 12, we have added many new capabilities to QlikView, building on the new engine foundation in the product. We introduced advanced analytics integration, allowing users to explore advanced calculations in real time, with direct data exchange between the Qlik engine and external engines such as R and Python. We also enabled unbalanced clustering, allowing QlikView clusters to run on machines with different configurations. We have made enhancements to the QlikView web client, including the ability to switch languages, detach charts, set references, and perform many other functions. We have significantly improved performance, stability, and manageability across the product, with throughput enhancements in QlikView Server, Publisher, and AccessPoint, a new load balancing capability to improve Publisher reliability, and a new structure for shared files. And, we released a new QlikView converter tool in Qlik Sense, allowing organizations to easily import fields, objects and expressions from QlikView apps into Qlik Sense libraries.

We are committed to QlikView for the future, and are planning at least one new feature release per year going forward. Our innovation for QlikView in 2018 and beyond centers on core product enhancements, coexistence with Qlik Sense, and hybrid cloud capabilities. Planned product improvements include further updates to the web client for performance and functionality, support for new storage and file share technologies, IPv6 support within QlikView server, simplified management of large volumes of content in the management console, and ongoing performance improvements and support for latest security requirements. We are also planning several features to make coexistence with Qlik Sense more seamless, including a single license that allows a user to access to both Qlik Sense and QlikView apps, common license management, a common scheduler, chaining between QlikView and Qlik Sense applications for continuous exploration, enhanced transition tools, and a unified point of access, allowing users to view and launch all of their QlikView and Qlik Sense apps. And we are planning support for



publishing QlikView apps to the cloud in our new hybrid cloud architecture, and for QlikView coexistence in hybrid cloud deployments.

### **Qlik NPrinting**

In February 2016 we introduced Qlik NPrinting 17, our next-generation reporting and distribution product. Qlik NPrinting 17 includes a web-based user interface for developers and administrators, a secure self-service portal for user exploration and report subscription, and enhanced multi-engine (or multi-threaded) scalability and role-based security for enterprise deployments. In 2016, we added support for Qlik Sense in addition to QlikView, allowing reports to be created from either product and analytics to be combined from both products within a single report.

Since inception we have made numerous enhancements to Qlik NPrinting for functionality and performance, including on-demand reporting for QlikView, extension object support, report import / export, report cycling, embedded reports in email, configurable output resolution, improved administration, management and monitoring, and a number of performance and stability improvements. We will continue to evolve and enhance Qlik NPrinting throughout 2018 and beyond, with planned capabilities such as new reporting features, authentication methods, improvements to integration with Qlik Sense and QlikView, native on demand reporting for Qlik Sense, FIPS compliance, a migration tool for older (version 16) environments, and integration with our new hybrid cloud architecture.

### **Qlik GeoAnalytics**

In 2017 we introduced Qlik GeoAnalytics, based on our acquisition of Idevio – a Qlik partner and provider of geographic software products. Qlik GeoAnalytics is our advanced geographic mapping and geospatial analysis solution for Qlik Sense and QlikView, currently offered as a combined mapping and geographic analysis add-on product and a separate geocoding service. We are planning several enhancements to Qlik GeoAnalytics in 2018 and beyond, including printing, coloring, and storytelling improvements, on-the-fly location lookup, and improvements to layering including line, density, chart, and geodata layers. We are also planning a new native map object for Qlik Sense, based on Qlik GeoAnalytics technology.

In summary, our investments in analytics will continue to allow us to meet the user where they are, across a broad range of analytics use cases, empowering them with the insights they need to make better decisions.

## About Qlik®

---

### Additional resources and information

Qlik's Associative Difference enables everyone to explore information and discover hidden insights.

- [Learn more about the Associative Difference and why Qlik is different](#)
- [Download our datasheet on Qlik's Associative Difference](#)

Qlik Sense is our governed, next-generation data analytics product family, supporting a full range of BI use cases.

- [Watch the Qlik Sense Product Tour video](#)
- [Download the Qlik Sense data sheet](#)

Qlik continues to be a leader in the data analytics market, as validated by prominent third parties.

- [Qlik is a leader in the Gartner Magic Quadrant for 7 years in a row](#)
- [Forrester positions Qlik as a leader in the The Forrester Wave™](#)
- [Qlik is a market leader in the 2017 BARC BI Survey](#)

Approximately 45,000 customers in 100 countries depend on us to support their most important decisions.

- [See Customer Case Studies](#)

Through our Qlik Software Grant Program, we donate Qlik software and services to help humanitarian and community-focused non-profit organizations.

- [Read about the Qlik Corporate Social Responsibility Platform](#)

The Qlik Academic Program supports the academic community by providing free Qlik licenses to university professors and researchers.

- [Read about the Qlik Academic Program](#)

The Qlik Data Literacy Program is a suite of learning resources designed to empower individuals and organizations to effectively utilize data.

- [Read about the Qlik Data Literacy Program in the Qlik Education catalog](#)

To learn more about Qlik, our products, and services, please visit <http://qlik.com>.

To experience Qlik products in action, please visit <http://demo.qlik.com/>.

To register for a free Qlik Sense Cloud account, please visit <http://qliksensecloud.com>.

## Release management and legal disclaimer

---

### Release management policy

While this statement of direction describes the general overview of our anticipated product direction, Qlik has defined a series of release management, maintenance and licensing policies for our products and services, which set forth then-current specifics regarding license terms and supported products. It is important to note that some of these policies may differ among Qlik products and services, and are subject to change. To access the current set of these policies please visit [www.qlik.com/license-terms](http://www.qlik.com/license-terms).

### Legal disclaimer

This statement of direction is intended to outline Qlik's general product direction and should not be relied on in making a purchase decision, as the development, release, and timing of any features or functionality described for our products remains at our sole discretion. The information in this document is based on Qlik's current product plans and strategy, which are subject to change by Qlik at any time and without notice. Nothing contained herein is a commitment to future product or feature availability in any way. This statement of direction is provided "AS IS," without warranty of any kind, express or implied.